

**Vetus 30**

Veterinary Diagnostic Ultrasound System

# WiSE for Better Care



companion animal



Search Mindray Animal Medical



LinkedIn Facebook Instagram

[www.mindrayanimal.com](http://www.mindrayanimal.com)  
[service@mindrayanimal.com](mailto:service@mindrayanimal.com)

©2026 Shenzhen Mindray Animal Medical Technology Co., LTD. All rights reserved.  
P/N:ENG-Vetus 30-210285X8P-20260318



## Vetus 30



Designed from a veterinary perspective and rooted in real clinical scenarios, the all-new Vetus 30 features the **WiSE Intelligent Workflow**. With its extremely user-friendly design and comprehensive clinical tools, the system offers intuitive, effortless operation. Powered by advanced imaging processing and the newly introduced **Adaptive Interference Suppression (AIS) technology**, Vetus 30 delivers authentic, detailed image clarity for greater confidence in clinical diagnosis.

## WiSE Intelligent Workflow

**WiSE** is designed to streamline the entire process from device adjustment to report generation, elevating user experience and exam efficiency for greater ease and confidence in every diagnosis.



### Well Designed

#### Quick and Safe Connection

- The probe slot is positioned higher to prevent cables from dragging on the floor.
- Compact, user-friendly, and durable for frequent plugging and unplugging.



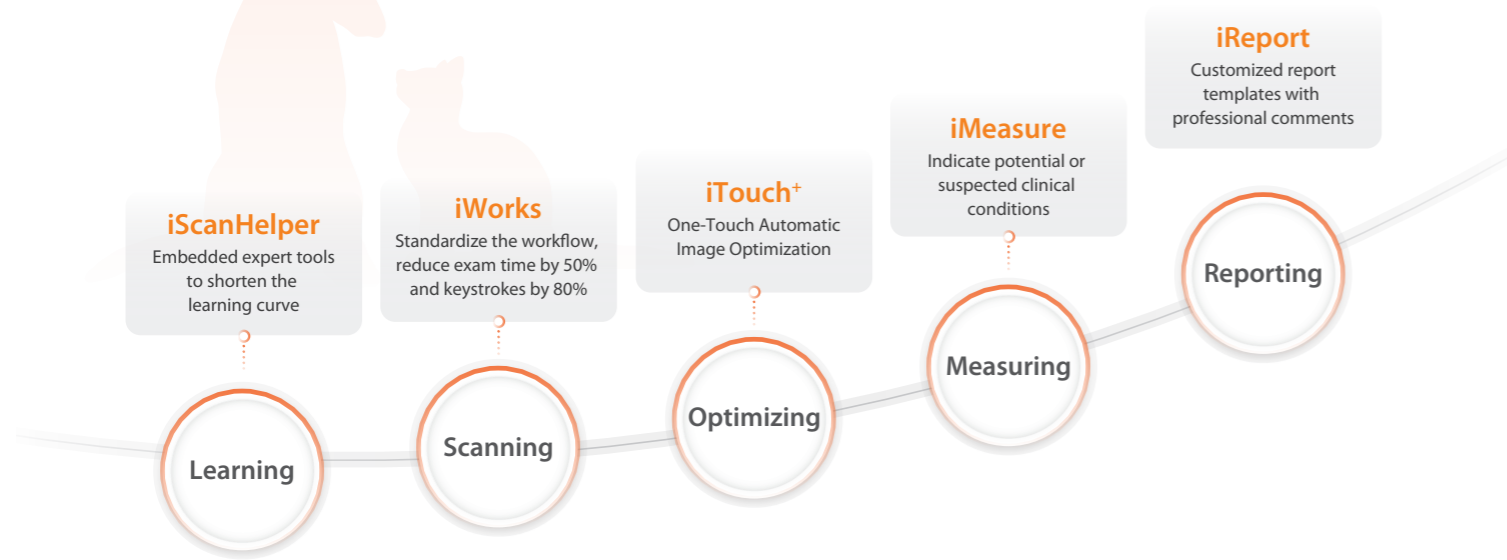
#### Flexible Adjustment

- Minimum height 0.76 m, ideal for scanning large dogs
- Overall width 0.51 m, easy to maneuver in tight spaces



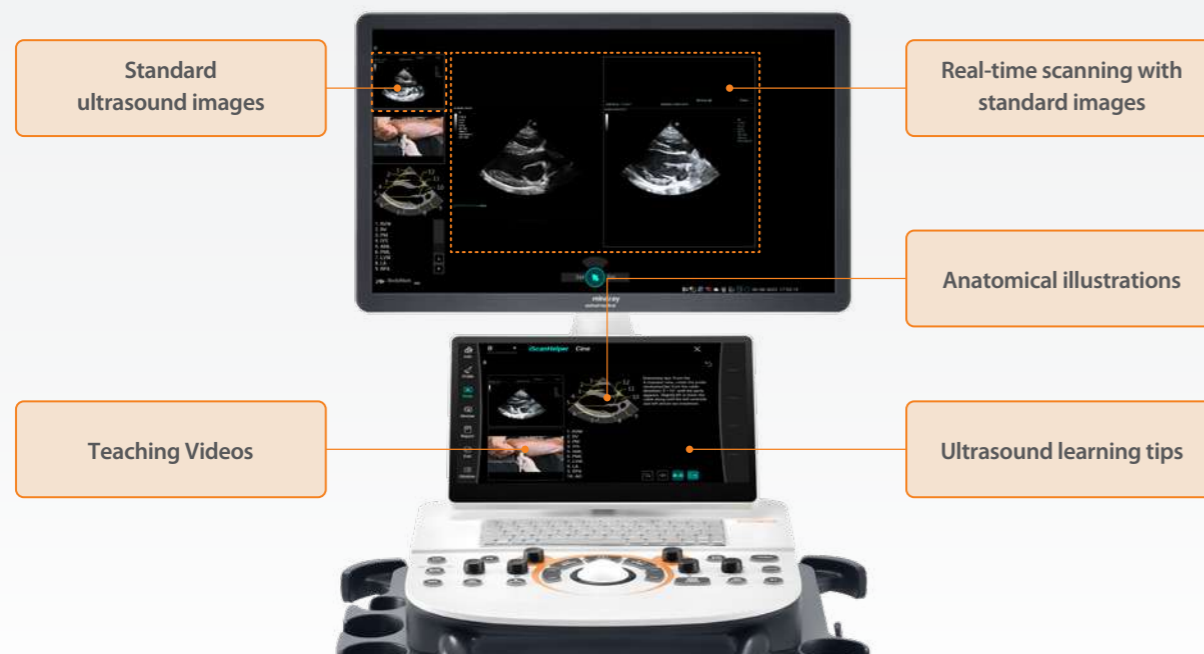
## i-Series

Vetus 30 offers a series of i-Tools that boost veterinary efficiency and help standardize the entire examination workflow.



### ► iScanHelper

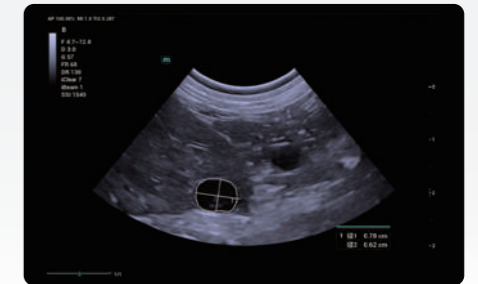
Built-in tutorials support 100+ standard planes for abdomen, cardiac, small parts and reproductive scans.



## Smart Tools

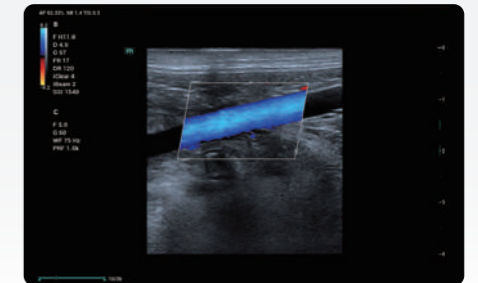
### ► Smart Calc

One-touch lesion tracing for automatic measurements of distance, area, circumference, mean gray value, etc.




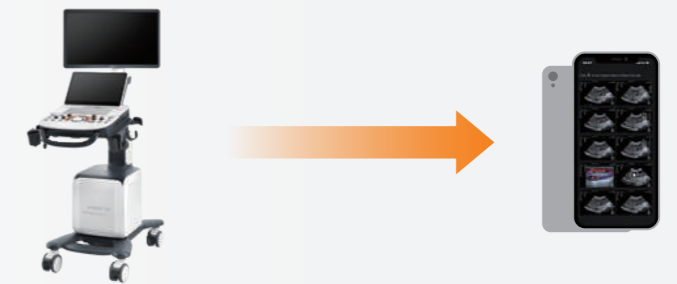
### ► Smart Track

Real-time vessel tracking and image optimization for Color and PW, simplifying the operation



## Easy share

 **Gallery Drop**



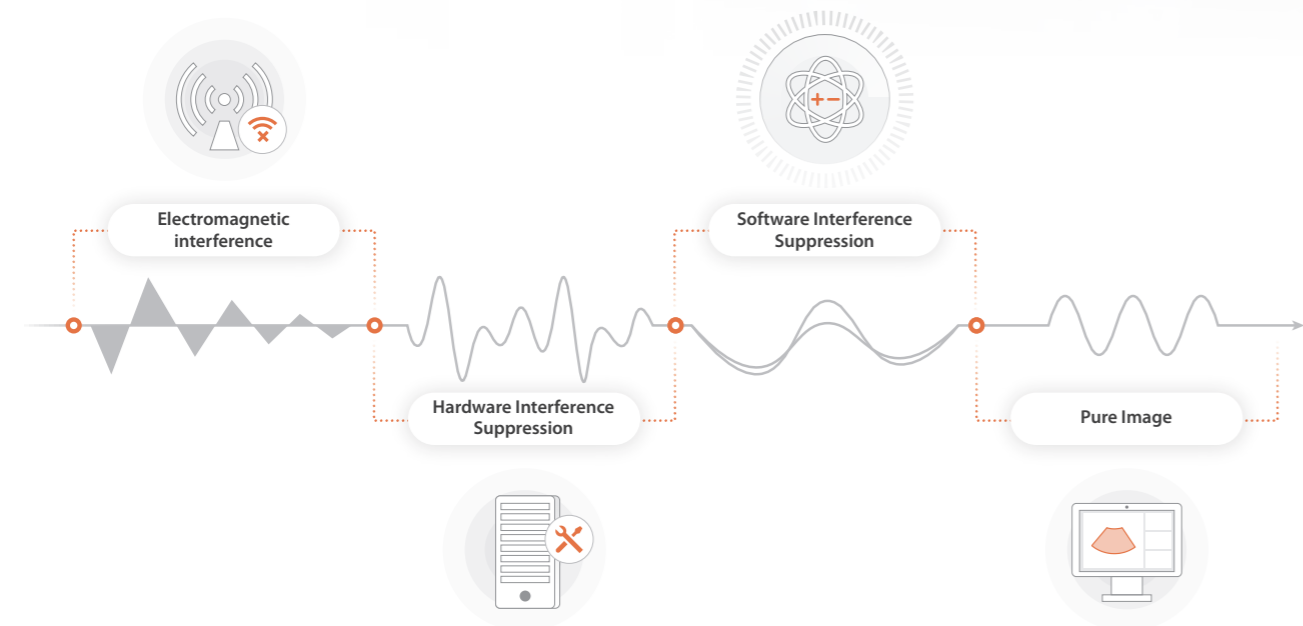
 **E-mail Sending**







# Superior Image Quality

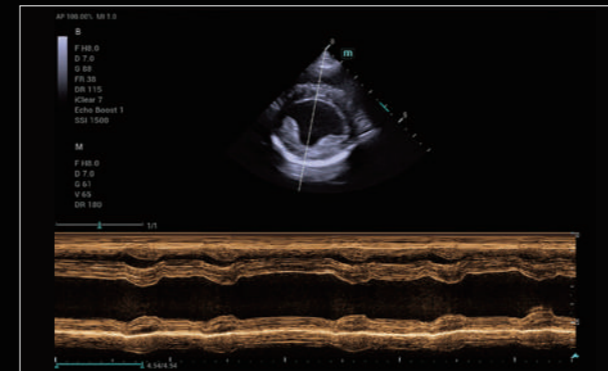
## AIS (Adaptive Interference Suppression) Technology

Electromagnetic interference in veterinary clinics often severely degrades ultrasound image quality. AIS technology combines precision hardware with innovative anti-interference algorithms to significantly reduce interference and deliver cleaner, more authentic imaging.

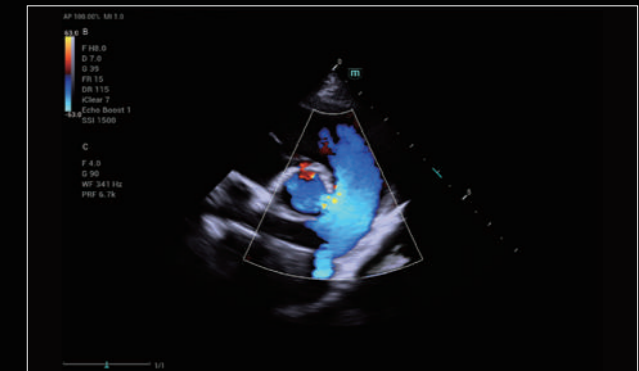


## Animal-Specific Presets

-  5 application categories
-  7 animal types
-  One-touch selection for fast switching
-  Customizable diagnostic presets



Canine Heart ( M Mode )



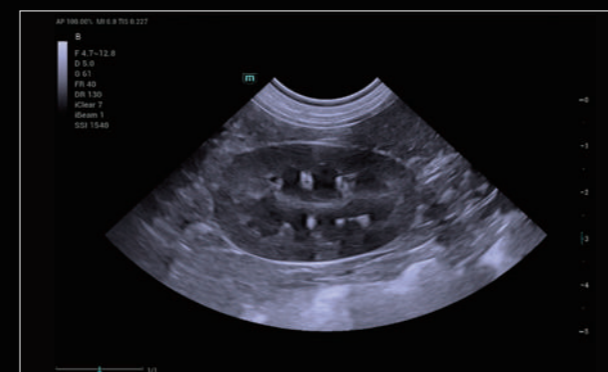
Canine Pulmonary Artery



Canine Adrenal Gland



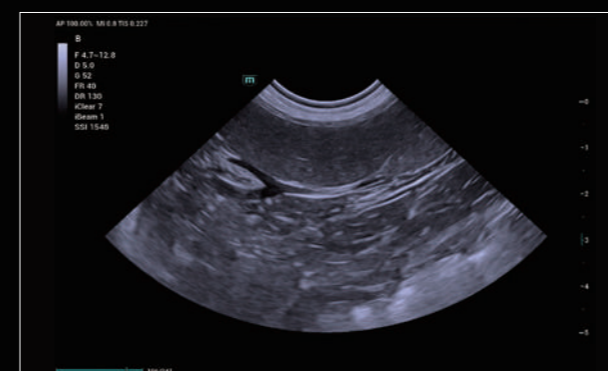
Canine Kidney ( Power Mode )



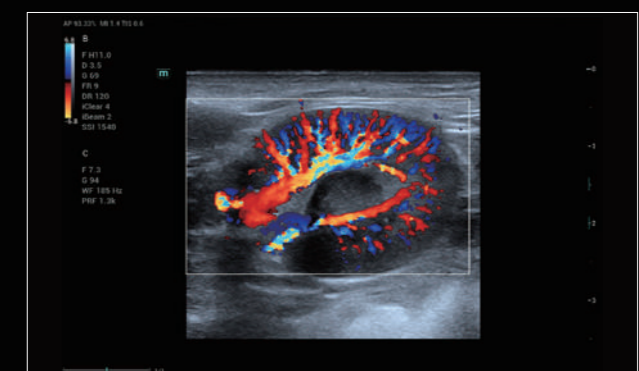
Canine Kidney



Canine Right Parasternal Four-Chamber View



Feline Spleen



Feline Kidney ( HR Flow )